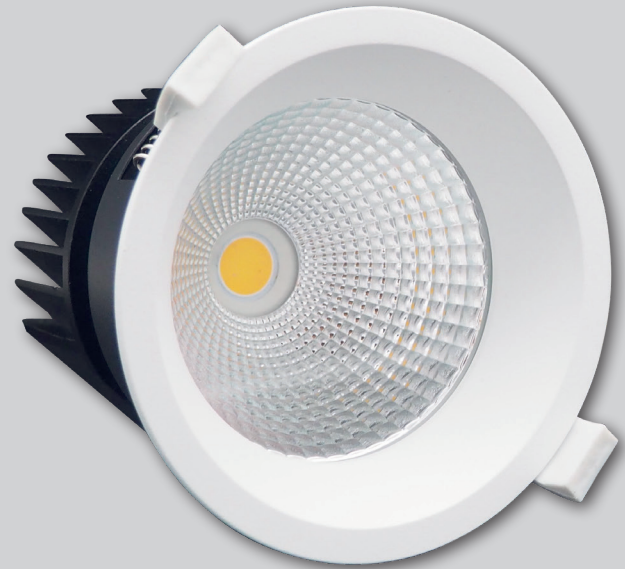


# MANA

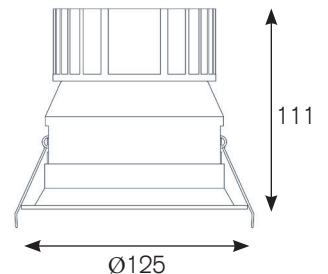
## Einbaustrahler

### Downlight



- LED-Leuchte zur Einbaumontage.
  - Solides Gehäuse aus Aluminium Druckguss.
  - Hochwertige Aluminium Reflektoren in unterschiedlichen Abstrahlwinkeln.
  - Klares Schutzglas schützt Chip und Reflektor vor Verunreinigung.
  - Inklusive leistungsfähigem Treiber und hocheffizientem COB.
- *Recessed LED-luminaire.*
  - *Solid housing made of die-cast aluminium.*
  - *High-quality aluminium reflectors, available in different beam angles.*
  - *Clear glass protects chip and reflector from dust and dirt.*
  - *Including high-performance driver and highly efficient COB.*



Cut-Out: Ø115



## INFORMATION

<b>KELVIN</b>	2700, 3000, 3100, 3500, 4000, 5000	Optional: FOOD, MEAT, FASHION
<b>LUMEN</b>	max. 3000Lm	
<b>CRI</b>	>80, >90	
<b>WATT</b>	max. 24W	
<b>TREIBER DRIVERS</b>	nicht dimmbar non dimmable	Optional: DALI
<b>FARBEN COLOURS</b>	schwarz, weiss, grau black, white, grey	
<b>REFLEKTOR REFLECTOR</b>	20° 	50° 
<b>ARTIKEL NUMMER ARTICLE NUMBER</b>	8029-...-...-... Details finden Sie auf Seite: 77   See page for more details: 77	